

WDX-200 Wavelength Dispersive X-ray Fluorescence Spectrometer



Cement



Steel



Minerals



Skyray Instrument • Bandwise Technology Development Co., Ltd., Beijing

WDX-200

Wavelength Dispersive Spectrometer

Company Profile

Bandwise Technology Development Co.,Ltd, Beijing, an affiliation to Skyray Instrument Inc, is the one and only manufacturer of Wavelength Dispersive X-ray Fluorescence Spectrometer in China. The mother company, skyray Instrument Inc., is an enterprise established in 1992 and engaged in R&D, production, sales and service of X-ray fluorescence spectrometers, which enjoyed high reputation in the industry and has won two world's NO 1 titles: NO 1 in SALES AMOUNT and NO 1 in PRODUCT CATEGORIES.

WDX-200 Wavelength Dispersive Spectrometer



■ Application Fields:

Building Materials

(cement, glass, ceramics)

Metallurgy

(steel, non-ferrous metals)

Petroleum

(trace elements S, Pb and so on)

Chemical Engineering

Geography and Mining

Commodity Inspection

Quality Inspection

Human Body Trace Elements Inspection

.....

WDX-200 Compact Multi-channel X-ray Fluorescence Spectrometer, with configuration of 10 fixed channels and capability to analyze 10 elements simultaneously, is able to conduct elemental analysis of arbitrary ten elements from Na to U based on the users' requirements. This instrument is widely used in cement, steel, powder metallurgy, coal, petroleum, kaolin, glass, refractory materials and environment protection, and accordingly an ideal choice for quality control in large and middle-scaled enterprises.

Si

Al

Fe

• Rapid • Accurate • Non-destructive • Intuitive • Environment-friendly •

K

Ca

Mg

Specifications

Model: WDX -200

Temperature control accuracy of constant temperature chamber: setting value $\pm 0.1^{\circ}\text{C}$.

Measurable elements: 10 arbitrary elements from Na to U.

Analysis algorithms: empirical coefficient algorithm and theoretical α -coefficient algorithm.

AC220V power supply: 1KVA AC purified stabilized voltage power supply.

High voltage supply: 200W (50KV4mA).

12-hour stability of tube voltage & tube current: less than 0.05 %.

Vacuum pump: biphasic-220V, 2 liters.

Industrial computer: industrial 104 computer.

Analysis accuracy: σ n-1 (24 hours, percent content) ≤ 0.05 %.

Measurement time of single sample: (including time for changing samples and vacuum pumping) $\leq 3-5$ minutes.

X-ray tube: 400W thin Be end window X-ray tube made by Varian company, Rh anode (Pd anode optional).

Detector: gas proportional detector + sealed proportional detector; 10 path 1024 channel independent pulse height analyzer.

Vacuum system: independent vacuum pump station, easy maintenance.

The highest vacuum degree: lower than 5 Pa.

Gas flow system: High Sophisticated Gas Density Stabilizer with pressure stability up to ± 0.003 Kpa.

Analysis software: equipped with software for two quantitative analysis algorithms: empirical coefficient algorithm and theoretical α -coefficient algorithm. With innovative technology of full spectrum analysis, every spectrum line can be timely traced and corrected, which greatly improves the repeatability and stability of quantitative analysis and also serves as intuitive evidence of instrument status diagnosis. Complete measures for self-diagnosis are supplied. In-built RS-232 serial communication protocol, TCP / IP protocol (S/ C based on Socket) and OPC protocol (OPC server) all offer ways to share data with DCS or QCS system.

Excellent qualities

- Rapid and non-destructive analysis of powder and bulk samples.
- Multi-channel high speed MCA offers timely measurement of every element peak, benefiting not only instrument debugging and failure diagnosis but also the enhancement of stability of the instrument.
- Compared with sequential scan large power spectrometers, WDS-200 gains adequate analysis precision even when lower power and equal measurement time are adopted, which not only endows the instrument with high cost performance, but also prevents wearing of the goniometer, prolongs the service life of X-ray tube, minimizes failures of the high voltage power supply and reduces the maintenance cost of the whole instrument.

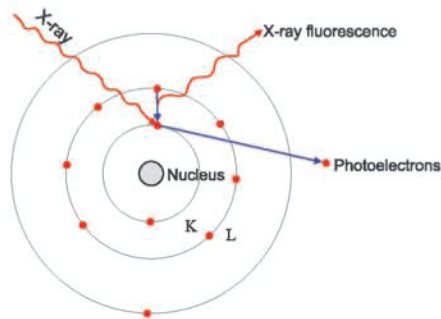
WDX-200

Wavelength Dispersive Spectrometer

[Principle of X-ray Fluorescence Analysis]

Element characteristic X-ray radiation

Different elements have extra-nuclear electronic orbitals of different binding energies, as a result, they give off X-ray photons carrying energies different from each other when excited, that is, each element emits X-ray at its own special energy, representing the characteristic of this element and accordingly called characteristic X-ray. Characteristic X-ray of each element has its specific wavelength; so when we detect X-ray of specific wavelength, we can identify the presence of the interested element in a sample.



Principle of Wavelength Dispersive Spectroscopy

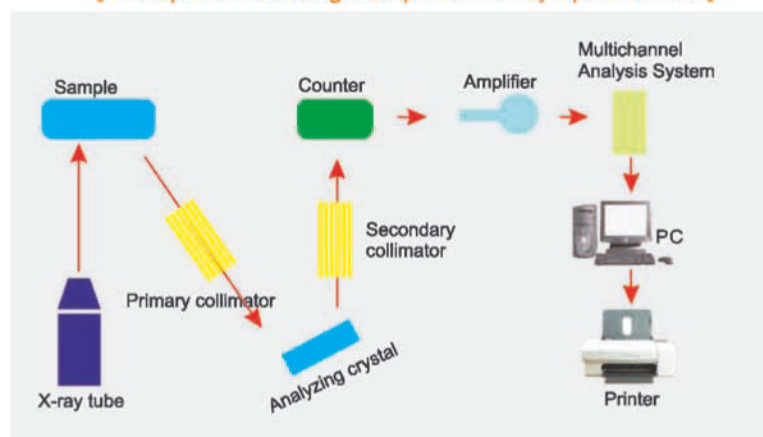
When many elements coexist in a sample and get irradiated by primary X-ray emitted from the X-ray tube, they will emit their corresponding characteristic X-rays, which in general are termed as X-RAY FLUORESCENCE. To separate and measure characteristic X-rays of these elements is called X-ray Fluorescence Spectroscopy.

As characteristic X-rays of different elements have specific wavelengths, they can be separated by using Crystal Diffraction based on Bragg Equation. This kind of spectroscopy is called Wavelength Dispersive Spectroscopy.

$$\text{Bragg Equation: } 2d \sin \theta = n \lambda$$

Where d is the interplanar spacing of the lattice planes of the crystals, θ is the angle of incidence and diffraction, λ is the wavelength of the incident radiation, n is the order of diffraction and is an integer.

[Principle of Wavelength Dispersive X-ray Spectrometer]



Software Review

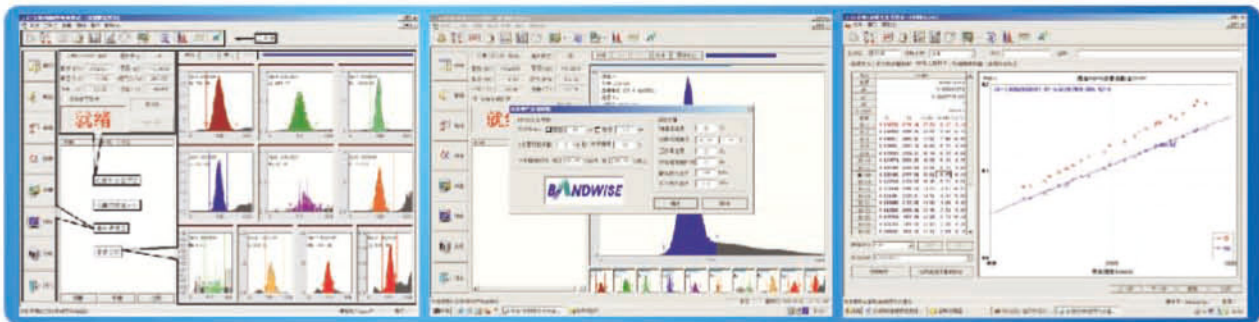
Functions:



Advantages of the Software:

1. Self-developed software system for X-ray Fluorescence Analyzers, applicable to windows operating system .
2. Easy manipulation realized by operating interface in all Chinese language.
3. With innovative technology of full spectrum analysis, every spectrum line can be timely traced and corrected, which greatly improves the repeatability and stability of quantitative analysis and also serves as intuitive evidence of instrument status diagnosis.
4. Equipped with software for two quantitative analysis algorithms: empirical coefficient algorithm and theoretical a-coefficient algorithm, among which the latter algorithm reduces the number of standard samples greatly and retains adequate accuracy at the same time.
5. Analysis data treatment including linear fitting and all kinds of matrices correction.
6. Calculation of characteristic value based on analysis value.
7. Man-machine interaction, allowing you to set and modify parameters.
8. Timely output of analysis data and report.
9. Complete self-diagnosis measures.

Spectrum of Wavelength Dispersive Spectrometer



Results of Cement Measurement

Cement Standard XS04-2

XS04-2	Si	Al	Fe	Ca	Mg
Standard Value	12.71	2.86	3.09	43.29	1.6
Average Value	12.724	2.862	3.074	43.318	1.584

WDX-200

Wavelength Dispersive Spectrometer

Continued

XS04-2	Si	Al	Fe	Ca	Mg
Max Value	12.74	2.88	3.08	43.35	1.61
Min Value	12.71	2.84	3.07	43.3	1.57
Range	0.03	0.04	0.01	0.05	0.04
SDV	0.011136	0.01077	0.004899	0.017776	0.013565
RDV	0.087516	0.376322	0.159368	0.041037	0.856355

Cement Standard XS05-2

XS04-2	Si	Al	Fe	Ca	Mg
Average Value	8724.72	1060.937	2657.513	23576.84	302.405
Max Value	8733.5	1065.37	2661.84	23596.69	304.96
Min Value	8715.27	1054.96	2652.05	23562.46	300.76
Range	18.23	10.41	9.79	34.23	4.2
SDV	6.626293	2.963579	3.476547	11.31869	1.419699
RDV	0.075948	0.279336	0.13082	0.048008	0.469469

Results of Agglomerate Measurement

Below are the results of repeated tests of the unknown sample:

No	Sample No	Measurement Time	Fe(%)	CaO(%)	MgO(%)	SiO ₂ (%)	So ₃ (%)
1	17#	2007-11-09 13:35	53.87	12.10	3.44	5.73	0.040
2	17#	2007-11-09 13:39	53.89	12.08	3.43	5.74	0.040
3	17#	2007-11-09 13:42	53.91	12.08	3.44	5.75	0.039
4	17#	2007-11-09 13:46	53.91	12.10	3.44	5.76	0.040
5	17#	2007-11-09 13:50	53.90	12.07	3.45	5.76	0.039
6	17#	2007-11-09 13:53	53.89	12.09	3.43	5.75	0.041
7	17#	2007-11-09 13:57	53.90	12.09	3.45	5.75	0.042
8	17#	2007-11-09 14:01	53.89	12.09	3.46	5.76	0.040
9	17#	2007-11-09 14:05	53.89	12.09	3.44	5.75	0.039
10	17#	2007-11-09 14:08	53.88	12.08	3.44	5.75	0.040

Test of 18-hour stability taken by unknown sample 17#; the results after total 306 times are:

Components	Average	Min	Max	SD
Fe(%)	53.891	53.850	53.920	0.012
CaO(%)	12.086	12.040	12.120	0.014
MgO(%)	3.446	3.420	3.470	0.010
SiO ₂ (%)	5.752	5.710	5.780	0.010
So ₃ (%)	0.040	0.038	0.042	0.001

Si

Al

Fe

• Rapid • Accurate • Non-destructive • Intuitive • Environment-friendly •

K

Ca

Mg

Results of Converter Slag Measurement

Below are the results of repeated tests of the unknown sample:

No.	Sample No.	Measurement time	Fe(%)	SiO ₂ (%)	CaO(%)	MgO(%)
1	D1-2702A	2007-11-12 16:52	12.75	7.74	50.41	9.11
2	D1-2702A	2007-11-12 16:56	12.73	7.75	50.39	9.12
3	D1-2702A	2007-11-12 17:00	12.71	7.77	50.38	9.14
4	D1-2702A	2007-11-12 17:04	12.73	7.78	50.35	9.14
5	D1-2702A	2007-11-12 17:08	12.74	7.78	50.33	9.15
6	D1-2702A	2007-11-12 17:11	12.76	7.80	50.27	9.18
7	D1-2702A	2007-11-12 17:15	12.76	7.80	50.27	9.18
8	D1-2702A	2007-11-12 17:19	12.76	7.80	50.25	9.18
9	D1-2702A	2007-11-12 17:22	12.77	7.81	50.24	9.19
10	D1-2702A	2007-11-12 17:26	12.76	7.82	50.24	9.23

Test of 15-hour stability taken by unknown sample D1-2702; the results after total 253 times are:

Components	Average	Min	Max	SD
Fe(%)	12.782	12.710	12.840	0.021
SiO ₂ (%)	7.818	7.740	7.840	0.011
CaO(%)	50.215	50.160	50.410	0.030
MgO(%)	9.217	9.110	9.290	0.027

Name list of some customers

- Sanhe Yanxin Cement and Building Materials Co., Ltd.
- Guangdong Tapai Group Co., Ltd. Huizhou Longmen Branch
- China Great Wall Aluminum Corporation Cement Plant
- Fujian Longlin Group Co., Ltd.
- Yunnan Kungang & K.wah Cement Construction Materials Co., Ltd.
- Jiaozuo Zhongjing Cement Co., Ltd.
- Shandong Station of Quality Supervision
- Qingtian Yifeng Minerals Co., Ltd.
- Jiuquan Iron & Steel Group Hongda Building Materials Co., Ltd.
- Hunan Yunfeng Cement Co., Ltd.
- Fujian Quanzhou Meiling Cement Co., Ltd.
- Liaoning Hengwei Cement Group Co., Ltd.
- Hebei Tiantashan Building Materials Co., Ltd

Names of customers are not arranged in particular order.



Skyray - We Only Make Precision Instruments
Spectroscopy - Chromatography - Mass Spectroscopy



Skyray Instrument

Beijing Bandwise Technology Development Co.,Ltd.

USA Office:

Add:639 Granite Street,suite 222 Braintree, MA02184

Tel:+1-617-202-3879

Fax:+1-617-202-3878

Website:www.skyrayinstrument.com

E-mail:sales@skyray-instrument.com

Kunshan Office:

Add:Skyray Building,Tsinghua Science Park,1666,
South Weicheng Rd.,Kunshan,Jiangsu Province

Tel:+86-0512-57018000

Fax:+86-0512-57017261

Website: www.skyray-instrument.com

E-mail: sales@skyray-instrument.com

United Kingdom:

Optech Solutions

Riverside Court, Beaufort Park, Chepstow NP16 5UH

Tel: +44 (0)1291 418148

Website: www.optechsolutions.co.uk

E-mail: info@optechsolutions.co.uk